

Wildlife and Carymoor Environmental Centre

Castle Cary is surrounded by pretty, traditional countryside full of small fields and ancient hedges rich in wildlife.

Three famous walks pass through the town -

The Leyland Trail, Macmillan Way and the Monarch's Way. In addition there are numerous short walks for the less ambitious - walk cards are available from the Market House or our website (www.castle-cary.co.uk) and longer guides and maps from Bailey Hill Bookshop.



Just over a mile from the town, the **Carymoor Environmental Centre** is next to a restored landfill site which has been developed into a wildlife-rich nature reserve.

The centre run regular half-term and holiday activities for all the family, and activity children's parties 'with a difference'!

To find out more visit www.carymoor.org.uk, telephone: 01963 350143.

Nearby, a public footpath passes through a 12-acre wetland conservation area of reed beds, ponds and tussocky grasslands which offers ideal conditions for a variety of wetland birds including several species of ducks, swans, egrets and even the occasional kingfisher.



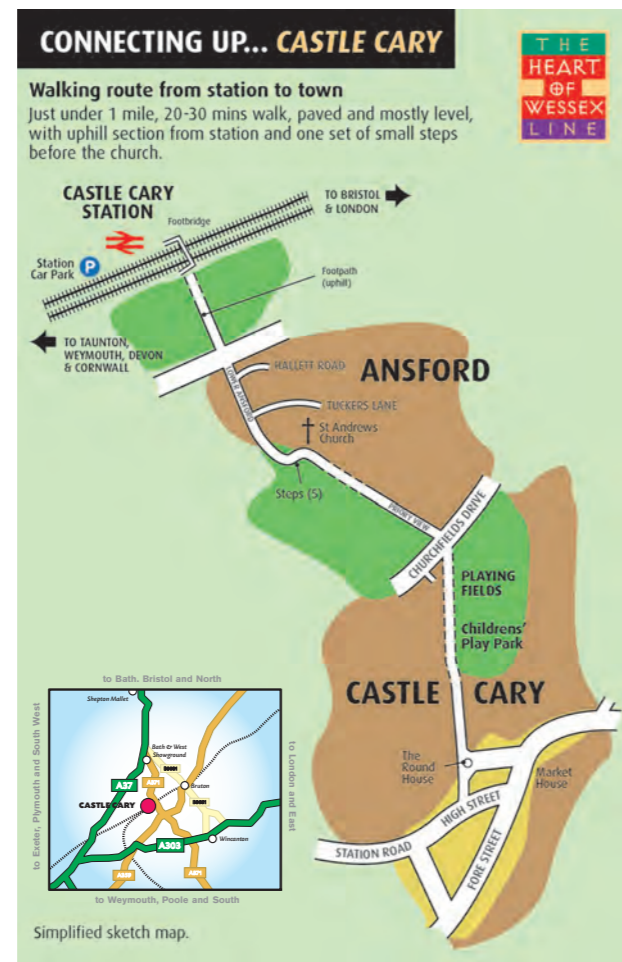
The reserve is also accessible from the Macmillan Way and Carymoor Drive.



Castle Cary

Is well served by rail links. **The Heart of Wessex line** trains run from Bristol Temple Meads through to Weymouth and **First Great Western** trains run from London Paddington through to Penzance both calling at Castle Cary.

For more information visit www.heartofwessex.org.uk or www.firstgreatwestern.co.uk and for train times call: 08457 484950



This leaflet was produced with the support of:
The Heart Of Wessex Rail Partnership • Castle Cary Town Council
• Our advertisers and all other contributors



www.fairtrade.org.uk

Castle Cary is a FairTrade town

Twinned with Remalard, France

FWB Printing Ltd 01963 33755

CASTLE CARY & ANSFORD

Castle Cary

One of the most attractive of Somerset's market towns

Tucked away in a secluded spot a few miles off the A303, the golden stone of Castle Cary and Ansford exudes a warm glow, complemented by its glorious setting in the South Somerset countryside and its friendly inhabitants.

Castle Cary and Ansford is known by its two parishes but local people simply call it "Cary".

At the heart is the recently refurbished **Market House**, built in 1855, its cobbled frontage, arched **Undercroft** and glass roofed **Shambles** (converted from the old, open-air meat market, but now warm and comfortable) provide a venue for many community activities, including exhibitions, children's activities, workshops, Saturday coffee mornings and much more. Inside the main entrance is the **Tourist Information Desk** and **Town Council Office** and upstairs is the **Museum of Domestic and Country Life**, with a **Dance Studio** on the top floor.



On Tuesday mornings the weekly general market sets up around the Market House.

Opposite is the thatched George Hotel one of the oldest buildings in the town dating at least from the 17th century. Close by are the High Street and Fore Street both crammed with small interesting shops selling food and drink, antiques and art, clothes and accessories, books and all the basics for holidaymaker and resident alike.

You will not find large supermarkets or chain store shops here.

Behind the Market House is a rare 18th century Round House lock-up constructed in 1779; it is one of only four such buildings remaining in the country.



Nearby places of interest:

→ National Trust Houses and Gardens (www.nationaltrust.org.uk)

Lytes Cary (house and garden) TA11 7HU
Montacute (house and garden) TA15 6XP
Stourhead (garden and house) BA12 6QD
Tintinhull (garden) BA22 8PZ

→ Heritage Sites

Glastonbury Abbey (www.glastonburyabbey.com)
Glastonbury Tor (www.nationaltrust.org.uk)
Muchelney Abbey (www.english-heritage.org.uk)
Muchelney Priest's House (www.nationaltrust.org.uk)
Wells Cathedral (www.wellscathedral.org.uk)
Cadbury Castle (*Iron age hill fort at South Cadbury*)

→ Other nearby attractions

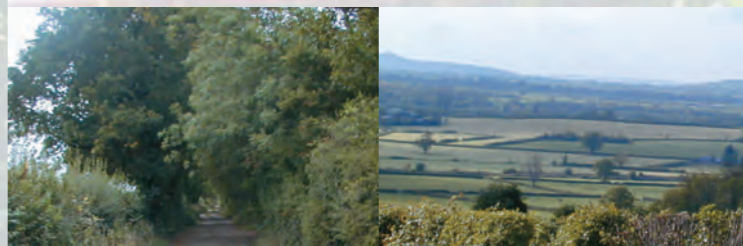
Clarks Village - retail outlet (www.clarksvillage.co.uk)
East Somerset Railway (www.eastsomersetrailway.com)
Fleet Air Arm Museum (www.fleetairarm.com)
Haynes Motor Museum (www.haynesmotormuseum.com)
Royal Bath & West (*showground*) (www.bathandwest.com)
Wincanton Racecourse (www.wincantonracecourse.co.uk)
Cheddar Gorge (www.visitcheddargorge.co.uk)
Wookey Hole (www.wookey.co.uk)
Longleat (house and safari park) (www.longleat.co.uk)
Mill on the Brue (children's activities) (www.millonthebrue.co.uk)

→ Walks

The Macmillan Way (www.macmillanway.org)
The Leland Trail (www.walkingpages.co.uk/trails_paths)
The Monarch's Way (www.monarchsway.50megs.com)

→ Cycle Rides

Information available at the Tourist Information Centre in the town or from www.visitsouthsomerset.com



Getting here...

... by Rail:

Castle Cary is two hours from London on the First Great Western service (www.firstgreatwestern.co.uk) main line from Paddington to Exeter and Penzance. Trains from Bristol, Bath and Weymouth also stop at Castle Cary station. See also details of the Heart of Wessex rail service.

... by Coach:

Berry's Coaches (www.berryscoaches.co.uk) offers a daily Superfast 2 Service between nearby Wincanton and Hammersmith Bus Station, London.

... by car:

from the A303, take the exit for Wincanton then follow the A371 to Castle Cary (around 15-20 minutes). Descending the hill into Castle Cary, turn left at the crossroads by the Waggon & Horses public house sign (on your right) then proceed downhill into the town centre.

... on Sat Nav:

entering post code BA7 7AH will guide you to Cary, wherever you're starting from...

More information

Castle Cary's historic past ensures that it is mentioned widely in literature and on the internet. Web browsers can start with the town's own website www.castle-cary.co.uk

Castle Cary's Living History Group has a large archive of photos and other materials currently held in the Museum. The group has also produced the following books that can be purchased in the town:
More Memories of Castle Cary & Ansford (2012)
Castle Cary & Ansford: Time to Reflect (2002)
For further information and to see forthcoming publications visit www.castlecaryansfordlivinghistory.org.uk

Also:

The Diary of a Country Parson: James Woodforde (1758 -1802) (*various editions*)

Tourist Information Centres

Castle Cary (at the Market House) Tel: 01963 351763
Cartgate (on the A303) Tel: 01935 829333
Yeovil. Tel: 01935 462781

Local Churches

All Saints, Castle Cary (www.castlecaryallsaints.org.uk)
St Andrew's, Ansford (www.ansfordchurch.co.uk)
Methodist Church, Castle Cary (www.somersetmethodists.org)

Useful websites

www.castle-cary.co.uk
www.visitsouthsomerset.gov.uk
www.hiddensomerset.co.uk



A Jewel in Somerset's Crown